

Grey cast iron GG25

TECHNICAL DATA BALL VALVE

Working temperature : -10°C up to max. +150°C, pressure dependent
 Working pressure: max. PN 16 bar
 Flange connection: according to DIN 2501/1-EN 1092-1
 with trough hole, except DN125-DN150
 Actuator connection: according to DIN EN ISO 5211
 Body material : gray cast iron GG25, coated
 Case material: gray cast iron GG25, coated
 Ball: brass MS 58, hard chrome-plated
 Ball seals: PTFE
 Stem : steel-9 SMnPb 36
 Stem seals : PTFE|HNBR O-Ring
 Overall length : according to EN 558-1 F4

TECHNICAL DATA ACTUATOR

Funktionalität : PD double acting
 Design feature : control shaft-bevel principle
 Piston channel : self centering in body
 Operating temperature : - 15° C up to + 80° C
 Angle of rotation : 90° from + 5° up to - 5° adjustable
 Torque max. : see chart (Nm) at 6 bars compressed air
 Control medium : filtered and oiled blast according Pneurop/ISO categorie 4

Mounting path :

Actuator/Armatur : 4 or 8 female thread in the body according to DIN ISO 5211

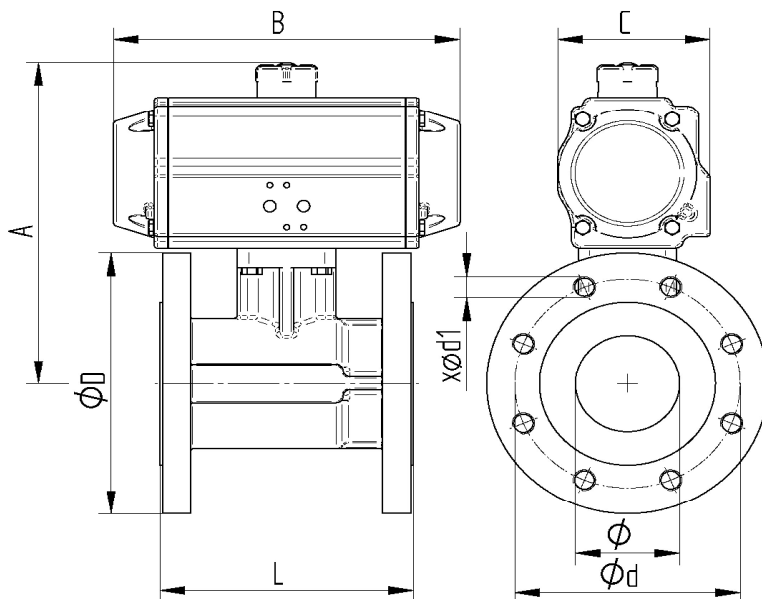
Actuator/Control valve : according to Namur respectively VDI/VDE 3845

Actuator/Signaling device : according to VDI/VDE 3845 (Namur)

Accessories actuator

Position announcement : optically, in the scope of supply mounts

Flangeconnection



Art. Nr.	DN	Nm	ø	A mm	B mm	C mm	L mm	øD mm	ød mm	x ød1
PE02 0909-06	25	22	25	210	189	90	125	115	85	4xø14
PE04 0909-07	32	44	32	238	229	113	130	140	100	4xø18
PE04 0909-08	40	44	40	248	229	113	140	150	110	4xø18
PE06 0909-09	50	68	50	278	266	139	150	165	125	4xø18
PE07 0909-10	65	100	61	284	337	157	170	185	145	4xø18
PE08 0909-11	80	141	74	381	377	178	180	200	160	8xø18
PE08 0909-12	100	141	95	396	377	178	190	220	180	8xø18
PE08 0909-13GW	125	327	120	359	377	178	200	250	210	8xM16
PE08 0909-14GW	150	327	145	380	377	178	210	285	240	8xM20