

Grey cast iron GG25

TECHNICAL DATA BALL VALVE

Working temperature :	-10°C up to max. +150°C, pressure dependent
Working pressure:	max. PN 16 bar
Flange connection:	according to DIN 2501/1-EN 1092-1 with trough hole, except DN125-DN150
Actuator connection:	according to DIN EN ISO 5211
Body material :	gray cast iron GG25, coated
Case material:	gray cast iron GG25, coated
Ball:	brass MS 58, hard chrome-plated
Ball seals:	PTFE
Stem :	steel-9 SMnPb 36
Stem seals :	PTFE HNBR O-Ring
Overall length :	according to EN 558-1 F4

TECHNICAL DATA ACTUATOR

Funktionalität :	PD double acting
Design feature :	control shaft-bevel principle
Piston channel :	self centering in body
Operating temperature :	- 15° C up to + 80 ° C
Angle of rotation :	90 ° from + 5° up to - 5° adjustable
Torque max. :	see chart (Nm) at 6 bars compressed air
Control medium :	filtered and oiled blast according Pneurop/ISO categorie 4

Mounting path :

Actuator/Armatur : 4 or 8 female thread in the body according to DIN ISO 5211

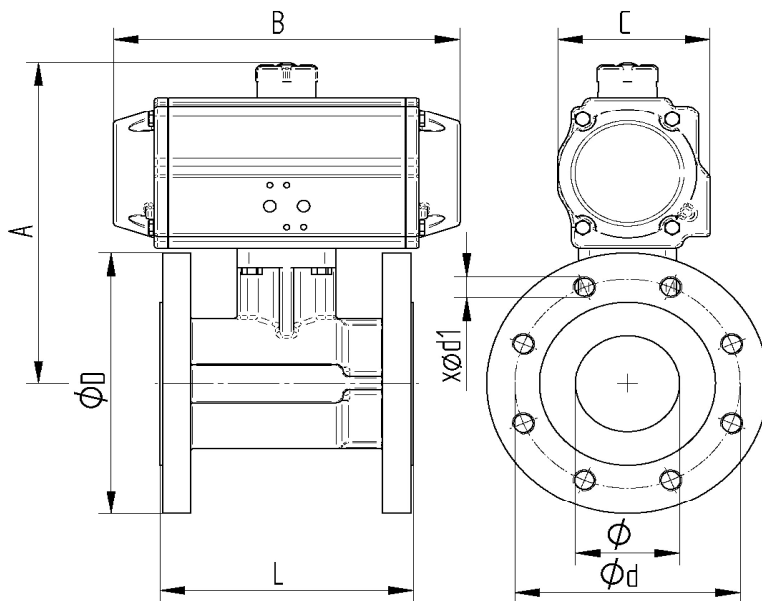
Actuator/Control valve : according to Namur respectively VDI/VDE 3845

Actuator/Signaling device : according to VDI/VDE 3845 (Namur)

Accessories actuator

Position announcement : optically, in the scope of supply mounts

Flangeconnection



Art. Nr.	DN	Nm	ø	A mm	B mm	C mm	L mm	øD mm	ød mm	x ød1
PD02 0909-06	25	22	25	191	154	71	125	115	85	4xø14
PD03 0909-07	32	44	32	214	189	90	130	140	100	4xø18
PD03 0909-08	40	44	40	224	189	90	140	150	110	4xø18
PD04 0909-09	50	68	50	242	210	103	150	165	125	4xø18
PD05 0909-10	65	100	61	226	229	113	170	185	145	4xø18
PD06 0909-11	80	141	74	246	264	126	180	200	160	8xø18
PD06 0909-12	100	141	95	259	264	126	190	220	180	8xø18
PD08 0909-13GW	125	327	120	342	337	157	200	250	210	8xM16
PD08 0909-14GW	150	327	145	363	337	157	210	285	240	8xM20