

Carbon steel

TECHNICAL DATA BALL VALVE

operating temperature:	-20°C(-30°C) up to +100°C, pressure dependent
working pressure:	max. PN 500 bar
actuator connection :	according to DIN EN ISO 5211
connecting thread:	according to DIN ISO 228/1
body material :	carbon steel 1.0737 / 1.0570 (1 1/4"-2")
butt weld:	carbon steel 1.0737 / 1.0570 (1 1/4"-2")
ball :	carbon steel 1.0737
ball seal :	POM
stem :	carbon steel 1.0737
stem seals :	POM, NBR

on request: seals for higher temperature

TECHNICAL DATA ACTUATOR

Funktionalität :	DW double acting
Design feature :	control shaft-bevel principle
Piston channel :	self centering in body
Operating temperature :	-20° C up to +80° C
Angle of rotation :	90 ° from + 5° up to - 5° adjustable
Torque max. :	see chart (Nm) at 6 bars compressed air
Control medium :	filtered and oiled blast according Pneurop/ISO categorie 4

Mounting path :

Actuator/Armatur : 4 or 8 female thread in the body according to DIN ISO 5211

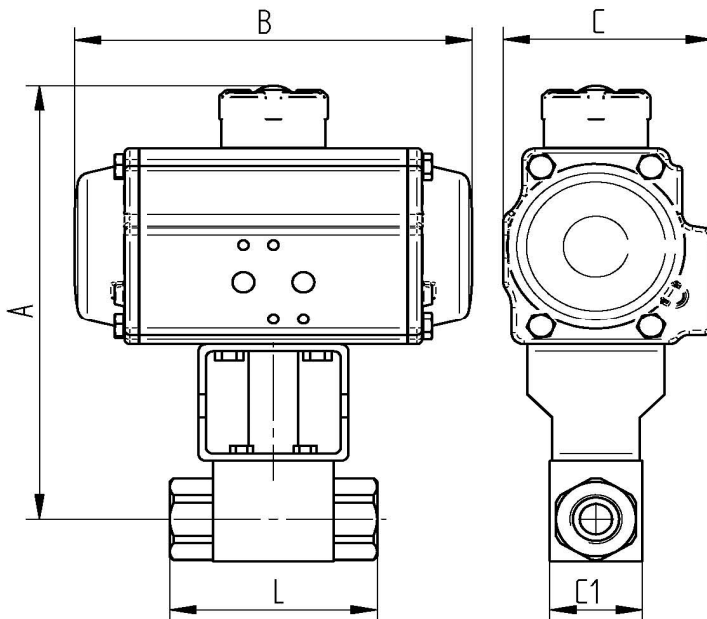
Actuator/Control valve : according to Namur respectively VDI/VDE 3845

Actuator/Signaling device : according to VDI/VDE 3845 (Namur)

Accessories actuator

Position announcement : optically, in the scope of supply mounts

Connecting thread female/female



Art. Nr.	G"	DN	L mm	C1 mm	A mm	B mm	C mm	Nm
DW034500-02	1/4"	6	71	30	183	162	84	36
DW034500-03	3/8"	10	73	35	187	162	84	36
DW034500-04	1/2"	13	83	37	187	162	84	36
DW044500-05	3/4"	20	95	49	213	208	96	70
DW054500-06	1"	25	112	55	230	246	108	110
DW054500-07	1 1/4"	32	115	85	241	246	108	110
DW064500-08	1 1/2"	40	131	105	260	266	123	160
DW074500-09	2"	50	140	117	309	347	151	333