

#### gray cast iron GG25

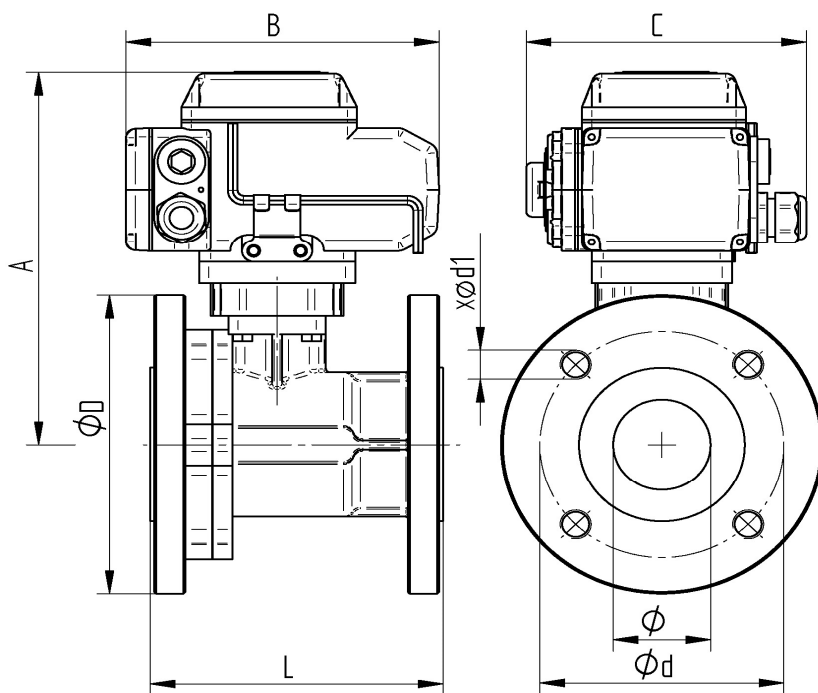
#### TECHNICAL DATA BALL VALVE:

Working temperature :	-10°C up to max. +150°C, pressure dependent
Working pressure:	max. PN 16 bar
Flange connection:	according to UNI EN 1092-1 with trough hole, except DN125-DN150
Actuator connection:	according to DIN EN ISO 5211
Body material :	gray cast iron GG25, coated
Case material:	gray cast iron GG25, coated
Ball:	brass MS 58, hard chrome-plated
Ball seals:	PTFE
Stem :	steel-9 SMnPb 36
Stem seals :	PTFE HNBR O-Ring
Overall length :	according to EN 558-1 F4

#### TECHNICAL DATA ACTUATOR

Functionality :	*Open* *Close*
Control voltage :	230 V AC 50/60 Hz; 24 V DC
Operating temperature:	- 25° C up to + 55° C
Turning angle:	opposed to 90° for ball valve max. 270°
Protective kind:	IP 67
Elektr. connection:	1 M20 Screw connection: Voltage supply 1 M20 Screw connection: Position feedback signal
Limit switches:	2 piece for 90° rotation 2 piece for feedback *Open* *Close*
Manual override:	Allen key
Housing   cover:	Aluminium alloy coated
<b>Junction</b>	
ISO-Connection:	according to DIN ISO 5211
Position indicator:	optical

#### Flangeconnection



Art. Nr. 230V 50 Hz.	Art. Nr. 24V DC	DN mm	ø	A mm	B mm	C mm	L mm	øD mm	ød mm	xød1 mm	sec	Nm
AE060909-06	AE070909-06	25	25	237	162	138	125	115	85	4xø14	25	50
AE060909-07	AE070909-07	32	32	242	162	138	130	140	100	4xø18	25	50
AE060909-08	AE070909-08	40	40	201	162	138	140	150	110	4xø18	25	50
AE060909-09	AE070909-09	50	50	206	162	138	150	165	125	4xø18	25	50
AE090909-10	AE100909-10	65	61	254	197	145	170	185	145	4xø18	30	100
AE090909-11	AE100909-11	80	74	262	197	145	180	200	160	8xø18	30	100
AE110909-12	AE120909-12	100	95	313	255	182	190	220	180	8xø18	30	200
AE110909-13GW	AE120909-13GW	125	120	347	255	182	200	250	210	8xM16	30	200
AE110909-14GW	AE120909-14GW	150	145	368	255	182	210	285	240	8xM20	30	200