

2 inductive proximity switch 2-wire, ATEX

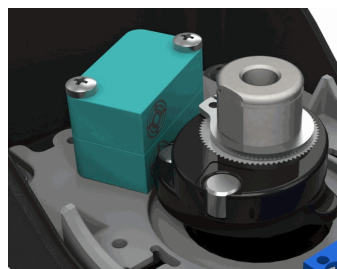
TECHNICAL DATA

Producer switch : P+F
 Switch type : NJ2-V3-N
 Voltage : 8 V DC
 Switch on : 1 mA
 Switch off : 3 mA
 Frequency : 1000 Hz.
 SIL category : up to SIL2 - IEC61508
 Temperature : -25°C up to max. +70°C
 ATEX : II 2G Ex ia IIC T6 Gb
 II 2D Ex ia IIIC T80°C Db
 CE Type examination certificate: IBExU 11 ATEX 1154
 Ex-Zone: Zone 1, Zone 21

Description:

- Compact and flexible limit switch box with flat cover made of conductive vestamid optional with 3D or 3D1 visual indicator and polycarbonate (PC) cover
- Adjustable stainless steel mounting bracket (AISI 304)
- Easy mounting on actuators according to VDI/VDE 3845 with a hole spacing of 80x30mm and 130 x 30mm and a shaft height of 20, 30, 40 and 50mm, optional with a hole spacing 50 x 25mm
- Enclosure IP66 according to DIN EN 60529 and DIN EN 60079-0
- Cable gland M20x1,5 black or blue (for cable Ø 6-12mm)
- Sealings EPDM and NBR, Screws AISI 304, Shaft stainless steel AISI 303
- Application: Explosive atmospheres of zone 1 and 21 (Ex e, Ex ia and Ex t)

Switch type



Art. Nr.	Shaft height	
49894075	20	
49894077	30	
49894076	20	1 Cable
49894030	30	
49894031	20	2 Cable
49894032	30	

Connection (2 cable)

