

2 mechanical switches, with silver contact

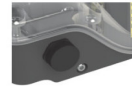
TECHNICAL DATA

Producer switch : Cherry
 Switch type : D44X
 Voltage : 12-250 V AC/DC
 Maximum current : 10A (250V AC), 2,5A (24V DC)
 Contacts : Silver
 Temperature : -25°C up to max. +80°C
- SIL Level SIL 1-3 (IEC61508:2010)

- New, easy and time-saving fastening system
- Sealings TPE and NBR, Screws AISI 304, Shaft polyamide PA6
- Transparent polycarbonate cover with integrated large OPEN-CLOSED indicator
- Other colours of casing available on request

Description

- Very compact limit switch box polyamide PA6
- Enclosure IP67 according to DIN EN 60529, in mounted status
- Cable gland M20x1,5 black (for cable Ø 6-12mm)
- Direct mounting without mounting bracket on actuators with a hole spacing 80 x 30mm and a shaft height of 20 or 30mm
- optional:** with mounting bracket suitable for actuator hole spacing: 50x25mm and 80x30mm and actuator shaft heights: 20,30,40 and 50mm
- Actuator shaft diameter: max. 32 mm



Art.Nr. 49894033
without cable

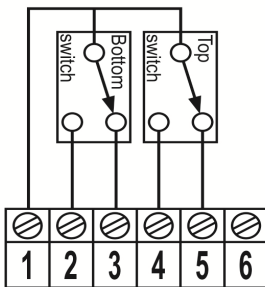


Art.Nr. 49894034
- Solenoid valve connection with 380 mm cable, in box soldered and carried out by a second gland M16x1,5 mm

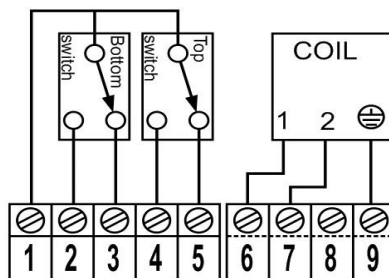


Art.Nr. 49894036
- Solenoid valve connection with 380 mm cable, in box soldered and carried out by a second gland M16x1,5 mm
- M12 plug connection, 5-pole

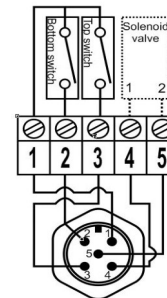
Connection Art.no. 49894033



Connection Art.no. 49894034



Connection Art.no. 49894036



Switch type:

