

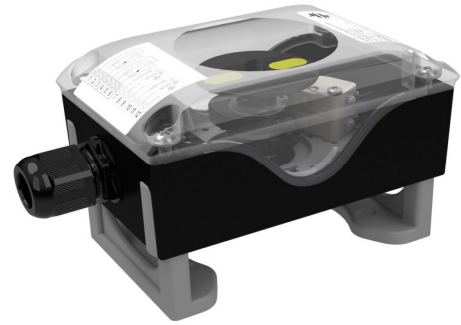
2 change over switches, with silver contact

TECHNICAL DATA

Producer switch :	ZF (Cherry)
Switch type :	D44X
Voltage :	12-250 V AC/DC
Maximum current :	10A (250V AC), 2,5A (24V DC)
Contacts :	Silver
Temperature :	-25°C up to max. +80°C
Protective kind:	IP67

Description

- Compact final counter box polyamide PA6 black, according to VDI/VDE 3845
- Protective kind case IP67 according to DIN EN 60529
- Cable screw connection black, M20x1,5 (for cable ø 6-12 mm)
- Assembly bridges height-adjustably and wide-adjustably from PA6 with 30% of fiberglass portion
- Seals EPDM and NBR, screws high-grade steel 1.4301
- Shaft Plyamid PA6 black
- SIL Level SIL 1-3 (IEC61508:2010)

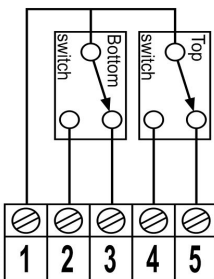


Switch type

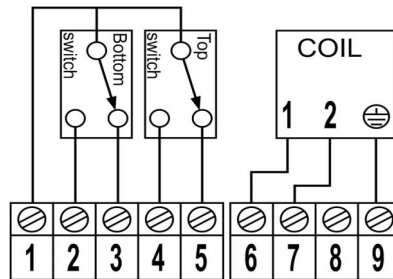


Art. no.	AERO-Art. no.	Shaft height	
49894020	9.410.010	20	1 Cable
49894022	9.410.020	30	
49894023	9.410.011	20	
49894024	9.410.021	30	2 Cable
49894025	9.410.012	20	
49894026	9.410.022	30	

Connection (0 cable)



Connection (0-1 cable)



Connection (2 cable)

