

DD 2-STAGE [DOSAGE] DOUBLE ACTING

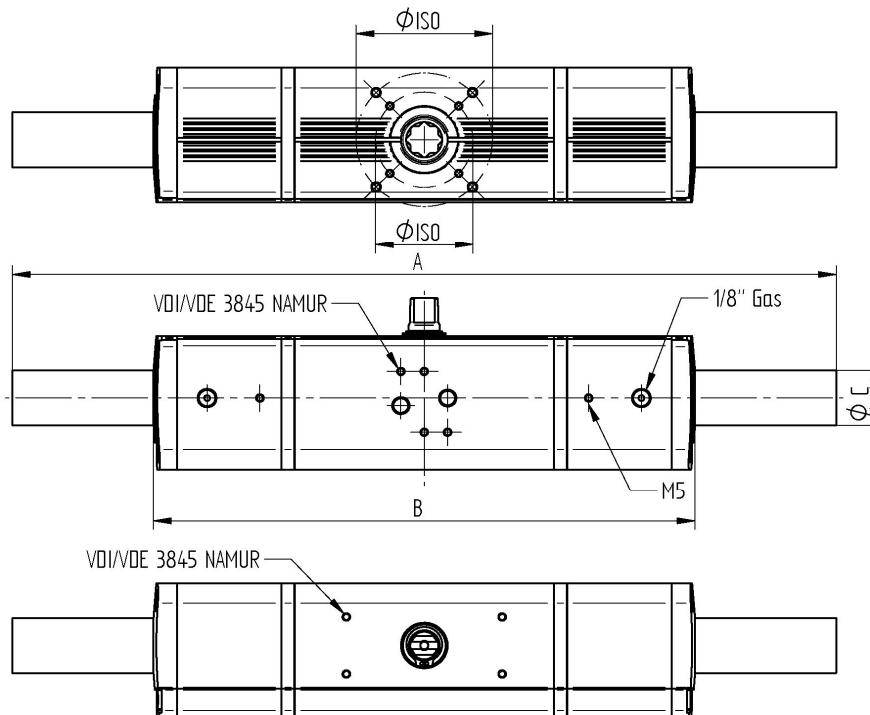
Technische Daten

Make:	OMAL S.p.A
Design characteristic:	Scotch yoke with rolling friction
Piston guidance:	Self-centering inside of the housing
Body:	Extruded aluminum alloy
End caps:	Die cast aluminum black coated
End caps seals:	NBR
Pinion [Drive shaft]:	Steel alloy
Piston:	Die cast aluminum alloy
Piston Pinion seals:	NBR, FKM-FPM
Rotation Stroke:	90° ±1° from 90° position adjustable
Temperature range:	-20°C up to +80°C
	FKM-FPM-sealing, up to max. 150°C
Torque max.:	See the table below
Pilot pressure:	Designed for 5,6 bars
Control medium:	Filtered and lubricated air [Pneurop/ISO class 4]
Actuator connection:	Acc.to DIN EN 5211
Control valve:	Acc. to Namur or VDI/VDE 3845
Signalling devices:	Acc. to Namur or VDI/VDE 3845



Approval:

ATEX 2014/34/EU



Article No.	Nm	A	B	ØC	Ø ISO	Gewicht	
WESA	OMAL	[5,6 bar]	[mm]	[mm]	[mm]	[Kg]	
DD01	DDN 30	30	355	245	29	F03 F05	1,8
DD02	DDN 60	60	423	278	29	F05 F07	2,8
DD03	DDN 106	120	502	345	29	F05 F07	4,7
DD04	DDN 240	240	589	416	40	F07 F10	8,0
DD05	DDN 480	480	702	491	55	F10 F12	14,3