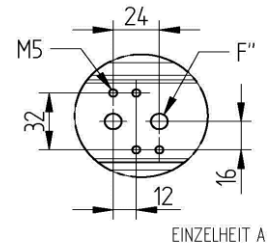
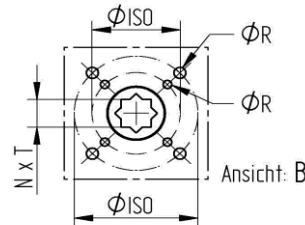
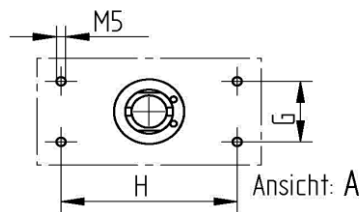
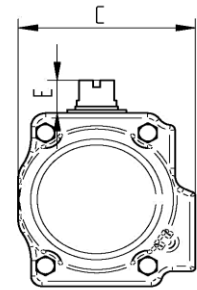
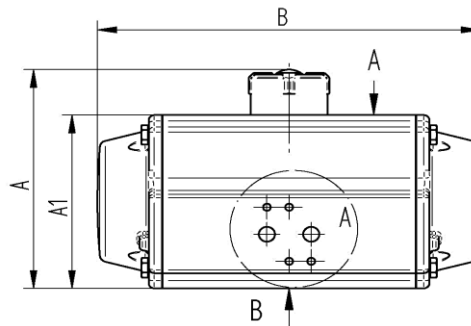


## DW - DOUBLE ACTING

### Technical data

Design characteristic:	Rack and pinion system	Pilot pressure:	Designed for 6 bars
Piston guidance:	Self-centering inside of the housing	Control medium:	Filtered and lubricated air [Pneurop/ISO class 4]
Body:	Extruded aluminum alloy	Actuator connection:	Acc.to DIN EN 5211
End caps:	Die cast aluminum RAL 5002 blue coated	Control valve:	Acc. to Namur or VDI/VDE 3845
End caps seals:	NBR	Signalling devices:	Acc. to Namur or VDI/VDE 3845
Pinion [Drive shaft]:	Steel alloy nickel plated	Approval:	ATEX acc. to 2014/34/EU
Piston Rack:	Die cast aluminum anodized		
Piston Pinion seals:	NBR		
Rotation Stroke:	90°   ±5° from 90° position adjustable		
Temperature range:	-20°C up to +80°C		
	FKM-FPM-sealing, up to max. 150°C		
Torque max.:	See the table below		



Article No.	Nm	A	A1	B	C	E	N	T	Ø ISO	H	øR	G	F''	Weight
	[6 bar]	[mm]	[mm]	[mm]	[mm]	[mm]	[mm]	[mm]	[mm]	[mm]	[mm]	[mm]	[mm]	[Kg]
DW01	9	76	48	125	54	20	9	10	F03 F05	50	M5 M6	25	1/8"	0,54
DW02	20	100	72	142	72	20	11	12	F03 F05	80	M5 M6	30	1/8"	1,16
DW03	35	113	85	162	84	20	14	16	F05 F07	80	M6 M8	30	1/8"	1,66
DW04	70	131	103	208	96	20	17	19	F05 F07	80	M6 M8	30	1/8"	3,22
DW05	110	144	116	246	108	20	17	19	F05 F07	80	M6 M8	30	1/8"	4,30
DW06	160	156	128	266	123	20	17	22	F07 F10	80	M8 M10	30	1/4"	5,92
DW07	333	196	159	347	151	30	22	24	F07 F10	80	M8 M10	30	1/4"	11,25
DW08	682	233	197	475	202	30	27	29	F10 F12	80	M10 M12	30	1/4"	21,80
DW09	1270	274	246	570	232	30	36	38	F14	130	M16	30	1/4"	38,40