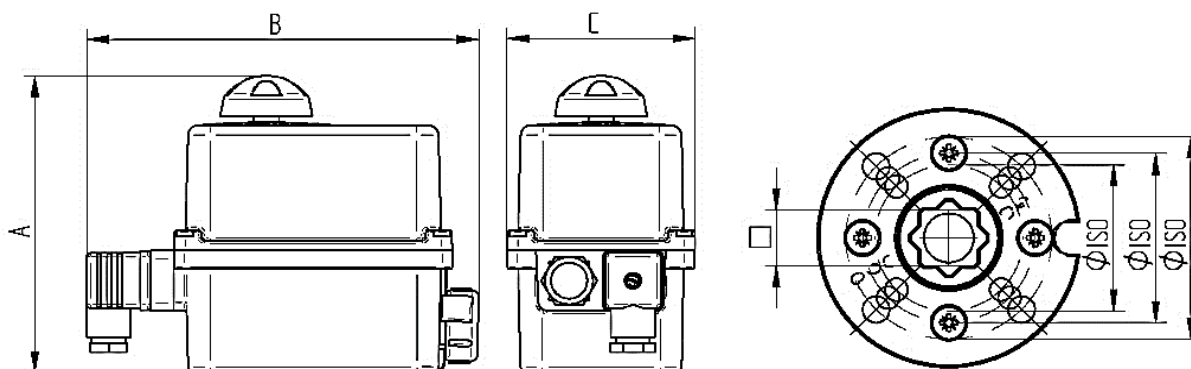


Technical data

Control voltage:	EK 1-WIRE AND RELAY [Make Valpes ER Premier]
	100V-240V AC 50 60 Hz [100V-350V DC]
	24V AC 50 60Hz [24V DC]
Mode of operation:	*OPEN* *CLOSE*
Turning angle:	Standard 0°-90°
Operating temperature:	-10°C up to +55°C -10°C up to +40°C by battery block
Electrical connections:	1 cable socket DIN 43650 3-pole + T
	1 PG cable gland ISO M20
Limit switches:	2 switches for 90° rotation
	2 switches for feedback *OPEN* *CLOSE*
Protection class:	IP 65
Actuator connection	Acc. to DIN ISO 5211
Housing cover:	Polyamide PA6.6 black Polyamide PA6.6 blue
Position indicator:	Rotary handle with integrated position indicator
Manual override:	Rotary handle on drive



Article WESA	Article Valpes	Nm	Sec.	Watt	A mm	B mm	C mm	ø ISO	□	Weight (Kg)
100-240V AC 1-WIRE AND RELAY										
EK01	ER20	20	13	15	152	189	92	F03-F04-F05	14	1,00
EK02	ER35	35	8	45	176	204	128	F05/F07	22	2,10
EK03	ER60	60	15	45	176	204	128	F05/F07	22	2,10
EK04	ER100	100	25	45	176	204	128	F05/F07	22	2,10

Artikel WESA	Artikel Valpes	Nm	Sec.	Watt	A mm	B mm	C mm	ø ISO	□	Weight (Kg)
24V DC 1-WIRE AND RELAY										
EK05	ER20	20	13	15	152	189	92	F03-F04-F05	14	1,00
EK06	ER20	35	8	45	176	204	128	F05/F07	22	2,10
EK07	ER20	60	15	45	176	204	128	F05/F07	22	2,10
EK08	ER20	100	25	45	176	204	128	F05/F07	22	2,10