

Stainless steel

TECHNICAL DATA

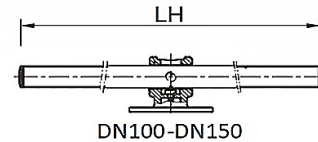
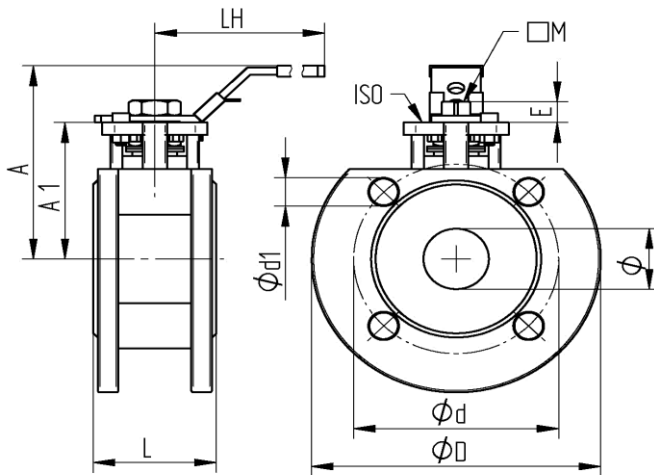
Construction:	2-way full bore ball valve
Design:	1-part design
Connection end:	Flange according to DIN 2501/1-EN 1092-1
Flange PN40	DN15-DN50+DN80
Flange PN16	DN100-DN150+DN65
Face to face dimension:	According to EN 558-1 series 27
Body wall thickness:	According to EN 12516-1
Actuator connection:	Acc.to DIN EN ISO 5211 [direct assembly]
Medium temperature:	0°C up to +65°C pressure dependent [90°C for max. 30 Minutes]
Medium nominal pressure	Max. 10 16 bar temperature-dependent
Body:	Stainless steel 1.4408
Ball:	Stainless steel 1.4401 with flushing hole
Stem:	Stainless steel 1.4401 Blow-out proof
Ball seal:	PTFE TFM1600
Stem seal:	PTFE TFM1600 EPDM O-Ring
DN15-DN80:	Handlever with locking device Stainless steel 1.4301, PVC-sleeve green
DN100-DN150:	Pipe lever zinc-plated steel, PVC-sleeve green
Automation:	Electric pneumatic actuator



Zulassung :

- DIN DVGW DRINKING WATER
DIN EN 13828 | DVGW W570-1 PN10 up to DN100
DIN EN 1074-1 | DIN EN 1074-2 PN16 up to DN 150
- SIL acc.to IEC61508|61518
- EAC acc.to TR CU 010/2011

Flangeconnection



Item No.	DN	L mm	A mm	A1 mm	LH mm	øD mm	ød mm	ød1 mm	M mm	E mm	ISO	PN bar	Weight (Kg)
931-04	15	42	82	48	145	95	65	4xM12	9	9	F03/04	10/16	1,30
931-05	20	44	85	51	145	105	75	4xM12	9	9	F03/04	10/16	1,75
931-06	25	50	98	62	175	115	85	4xM12	11	11	F04/05	10/16	2,13
931-07	32	60	110	72	175	140	100	4xM16	11	11	F04/05	10/16	3,68
931-08	R40	65	115	78	196	150	110	4xM16	14	14	F05/07	10/16	4,65
931-09	50	80	123	86	196	165	125	4xM16	14	14	F05/07	10/16	6,28
931-10	R65	110	168	110	265	185	145	4xM16	17	17	F07/10	10/16	10,10
931-11	R80	120	170	116	265	200	160	8xM16	17	17	F07/10	10/16	14,42
931-12	R100	150	210	139	400	220	180	8xM16	22	22	F10	10/16	22,65
931-13	R125	180	256	176	800	250	210	8xM16	27	27	F12	16	33,50
931-14	150	225	272	192	800	285	240	8xM20	27	27	F12	16	50,60

01/2024

Measurements, as well as pictures are non-binding. We reserve ourselves changes according to the state of the technology
WESA-Armaturen GmbH * 73650 Winterbach *Spanninger Straße 5 * Telefon: +49 (0) 7181 404-0 · Telefax: +49 (0) 7181 404-33