

Stainless steel

TECHNICAL DATA

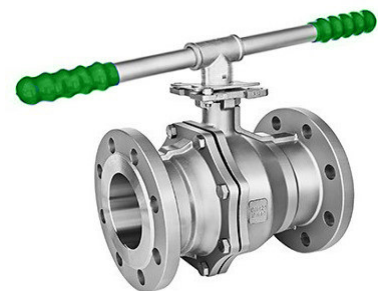
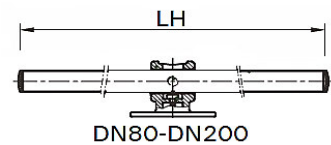
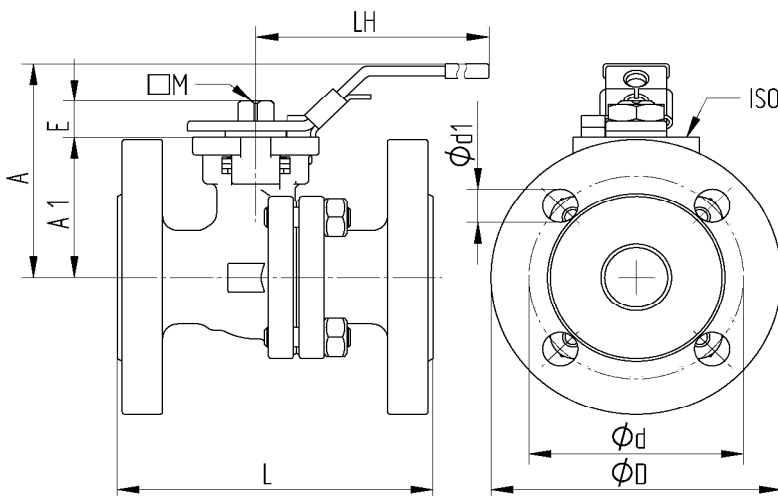
Construction:	2-way full bore ball valve
Design:	2-part design
Connection end:	Flange according to DIN 2501/1-EN 1092-1
Flange PN40	DN15-DN50
Flange PN16	DN65-DN200
Face to face dimension:	According to EN 558-1 series 27
Body wall thickness:	According to EN 12516-1
Actuator connection:	Acc.to DIN EN ISO 5211 [direct assembly]
Medium temperature:	0°C up to +65°C pressure dependent [90°C for max. 30 Minutes]
Medium nominal pressure:	Temperature-dependent Max. PN16 for drinking water Max. PN40 for other medium (DN15-DN50)
Body:	Stainless steel 1.4408
Ball:	Stainless steel 1.4401 with flushing hole
Stem:	Stainless steel 1.4401 Blow-out proof
Ball seal:	PTFE TFM1600
Stem seal:	PTFE TFM1600 EPDM O-Ring
DN15-DN65:	Handlever with locking device Stainless steel 1.4301, PVC-sleeve green
DN80-DN200:	Pipe lever zinc-plated steel, PVC-sleeve green
Automation:	Electric pneumatic actuator



Approval:

- DIN DVGW DRINKING WATER
DIN EN 13828 | DVGW W570-1 PN10 up to DN100
DIN EN 1074-1 | DIN EN 1074-2 PN16 up to DN 200
- SIL acc.to IEC61508|61518
- EAC acc.to TR CU 010/2011

Flange connection



Item No.	DN	L mm	A1 mm	A mm	LH mm	ød mm	ød mm	ød1 mm	M mm	E mm	ISO	PN(bar)	Weight (Kg)
930-04	15	115	48	78	145	95	65	4xø14	9	9	F 03/04	10 16 40	2,37
930-05	20	120	53	84	145	105	75	4xø14	9	9	F 03/04	10 16 40	3,15
930-06	25	125	58,5	90	175	115	85	4xø14	11	11	F 04/05	10 16 40	4,09
930-07	32	130	71	102	175	140	100	4xø18	11	11	F 04/05	10 16 40	5,56
930-08	R40	140	76	110	190	150	110	4xø18	14	14	F 05/07	10 16 40	6,98
930-09	50	150	85	118	190	165	125	4xø18	14	14	F 05/07	10 16 40	9,67
930-10	R65	170	101,5	150	265	185	145	4xø18	17	17	F 07/10	10 16	13,90
930-11	R80	180	111,5	176	300	200	160	8xø18	17	17	F 07/10	10 16	18,10
930-12	100	190	140	210	400	220	180	8xø18	22	22	F 10	10 16	25,30
930-13	125	325	183	263	600	250	210	8xø18	27	27	F 12	16	51,00
930-14	150	350	204	284	800	285	240	8xø22	27	27	F 12	16	72,50
930-15	200	400	252,5	334	800	340	295	12xø22	27	27	F 12	16	120,00

02/2025

Measurements, as well as pictures are non-binding. We reserve ourselves changes according to the state of the technology
WESA-Armaturen GmbH * 73650 Winterbach *Spanninger Straße 5 * Telefon: +49 (0) 7181 404-0 · Telefax: +49 (0) 7181 404-33