

## Ductile graphite iron GGG40

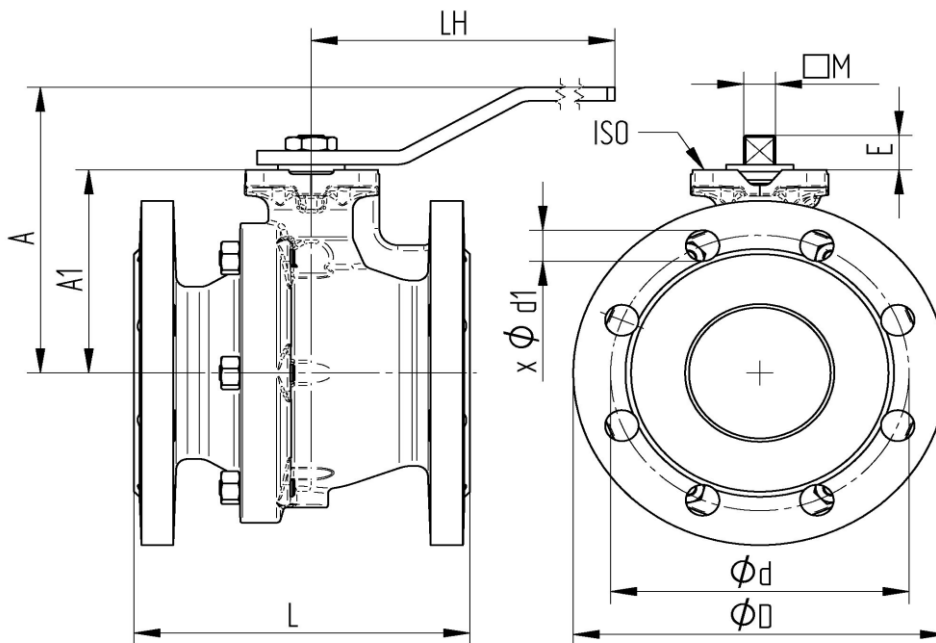
### TECHNICAL DATA

Working temperature :	-10°C up to max. +70°C, pressure dependent
Working pressure:	max. PN 16 bar
Flange connection:	according to DIN 2501/1 - EN 1092-1
Actuator connection:	according to DIN EN ISO 5211
Body material :	Spheroid ductile iron GGG40, blue RAL5002
Ball :	Brass CW614N, chrome plated
Ball seals:	PTFE
Stem :	Brass CW614N, blow-out proofed
Stem seals :	PTFE   2-fold NBR O-Ring
Face to facedimension:	according to EN 558-1 F4/F5
Handle:	steel, yellow coated



**Approval:**  DIN DVGW GAS acc.to DIN EN 331

### Flangeconnection



Art.Nr.	DN	L mm	A mm	A1 mm	LH mm	øD mm	ød mm	ød1 mm	E mm	M mm	øISO	PN bar	weight (g)
919-04	15	115	84	50,5	160	95	65	4xø14	9,5	9	F 04	16	2,60
919-05	20	120	84	52	160	105	75	4xø14	11,5	9	F 04	16	3,30
919-06	25	125	96	59	170	115	85	4xø14	14,5	11	F 04	16	4,20
919-07	32	130	101	64	170	140	100	4xø18	14,5	11	F 04	16	5,80
919-08	40	140	125	78,5	230	150	110	4xø18	17,5	14	F 05	16	7,50
919-09	50	150	135	87	230	165	125	4xø18	17,5	14	F 05	16	9,00
919-10	65	170	143	95	230	185	145	4xø18	17,5	14	F 05	16	10,50
919-11	80	180	165	118	280	200	160	8xø18	20	17	F 07	16	15,50
919-12	100	190	180	132,5	360	220	180	8xø18	20	17	F 07	16	18,50
919-13	125	200	225	165	450	250	210	8xø18	24,5	22	F 10	16	28,00
919-14	150	210	243	182,5	560	285	240	8xø22	24,5	22	F 10	16	38,50
919-15	200	400	320	230	1000	340	295	12xø22	27	27	F12	16	93,00