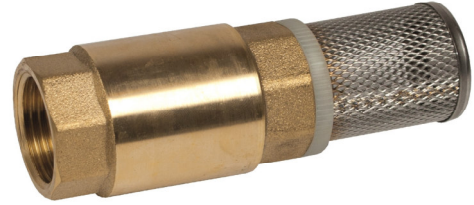


Hot pressed brass

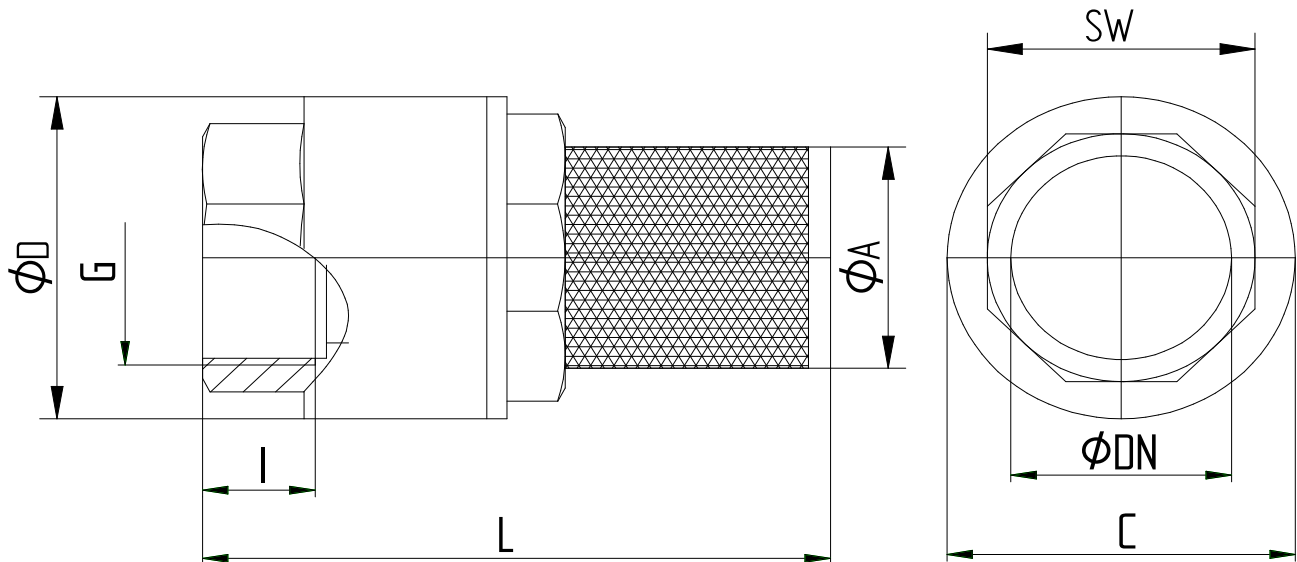
TECHNICAL DATA

temperature range :	- 20°C up to max. +100°C, pressure depending
pressure range :	up to max. PN 25 bar, depending of nominal size
Cracking pressure:	0,02 bar
body material :	hot-pressed brass - CW617 N - UNI EN 12165
connecting thread :	according to DIN ISO 228/1
sealing:	EPDM
valve cone:	hot-pressed brass - CW617 N - UNI EN 12165
spring:	stainless steel AISI 302
strainer:	stainless steel, hole size 1 mm ²
Strainer connection:	Nylon
Filtration ratio:	from 3/8" up to 2": 1200 µm from 2 1/2" up to 4": 2000 µm



For horizontal and vertical instalation

Connecting thread female/female



Art. Nr.	G"	øDN	l mm	L mm	øA mm	øD mm	SW mm	PN(bar)	Gewicht (g)
1412-03	3/8"	13	14	95	18,5	34,5	21	25	195
1412-04	1/2"	15	14	99	22	34,5	25	25	188
1412-05	3/4"	20	14	108	28	42	31	25	260
1412-06	1"	25	17	122	36	47	40	25	413
1412-07	1 1/4"	32	18	140	43	60,5	50	16	649
1412-08	1 1/2"	40	19	160	48,5	70,8	55	16	945
1412-09	2"	50	21	178	60,5	87	67	16	1542
1412-10	2 1/2"	65	23	204	79	119	88	10	3024
1412-11	3"	80	29	235,5	92,5	140	100	10	4421
1412-12	4"	100	30	272	115	154	126	10	