

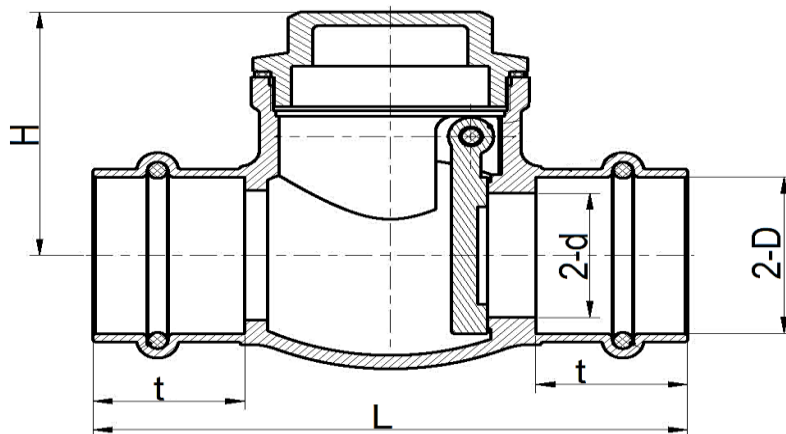
Hot pressed brass

### TECHNICAL DATA

Body material:	Brass CW717N, low lead content
Flap:	Brass CW717N, low lead content
Flap sealing:	metallic
Cap-sealing:	PTFE
O-Ring:	EPDM
Operating temperature:	0°C up to. + 100°C, pressure dependent
Working pressure:	max. PN 16 bar
Opening pressure:	0,03 - 0,05 bar
Connection:	press-fit system
Presskonturen:	Viega: 18 mm bis 54 mm
Instalation:	horizontal   vertical



### press-fit system



Item No.	G"	DN	øD mm	ød mm	L mm	t mm	H mm	Press contour size	VIEGA	MANNESMANN
1053-04	1/2"	15	16,3	13	73	18	35	15x15	OK	OK
1053-05	3/4"	20	22,5	18	83	23	39,5	22x22	OK	OK
1053-06	1"	25	28,9	23	92	23,5	45	28x28	OK	OK
1053-07	1 1/4"	32	35,5	30	102,5	26	53,5	35x35	OK	OK
1053-08	1 1/2"	40	41,4	35	126,5	36	59,5	42x42	OK	NO
1053-09	2"	50	54,4	45	152	45	66	54x54	OK	NO

