

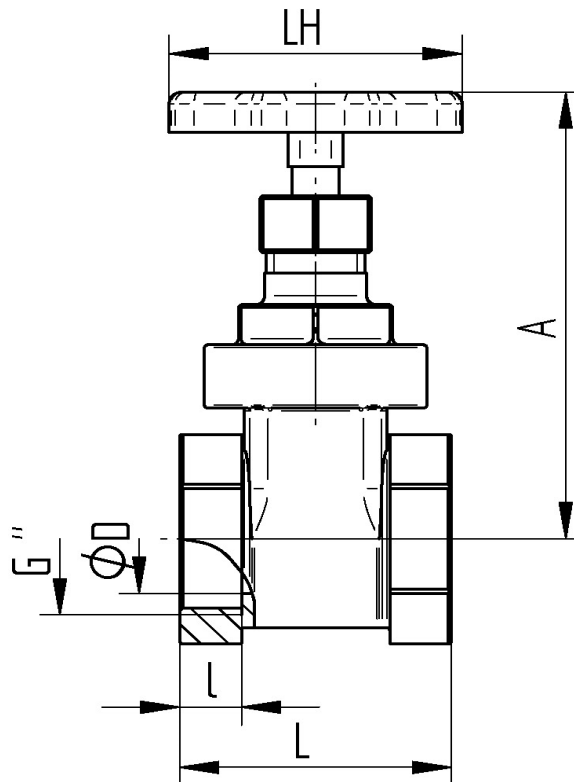
Bronze RG5

TECHNICAL DATA

temperature range :	- 15°C up to max. + 80°C, pressure-dependent
pressure range :	max. PN 16 bar
connecting thread :	according to DIN ISO 228/1
body material :	red brass RG 5
stem seals :	PTFE
bonnet seal:	PTFE
sealing:	metal to metal
stem:	non rising
handwheel:	steel plate, painted red



Connecting thread female/female



Art. Nr.	G"	DN	øD mm	L mm	l mm	A mm	LH mm	PN bar	weight (g)
2030-04	1/2"	15	15	37	9,5	71	55,5	16	233
2030-05	3/4"	20	19	44	10,5	81	55,5	16	326
2030-06	1"	25	24	46	10,5	89	55,5	16	428
2030-07	1 1/4"	32	32	50	10,5	107	60	16	641
2030-08	1 1/2"	40	37	57	13,5	129	70	16	869
2030-09	2"	50	47	60	14	146	90	16	1347