

Stainless steel

TECHNICAL DATA

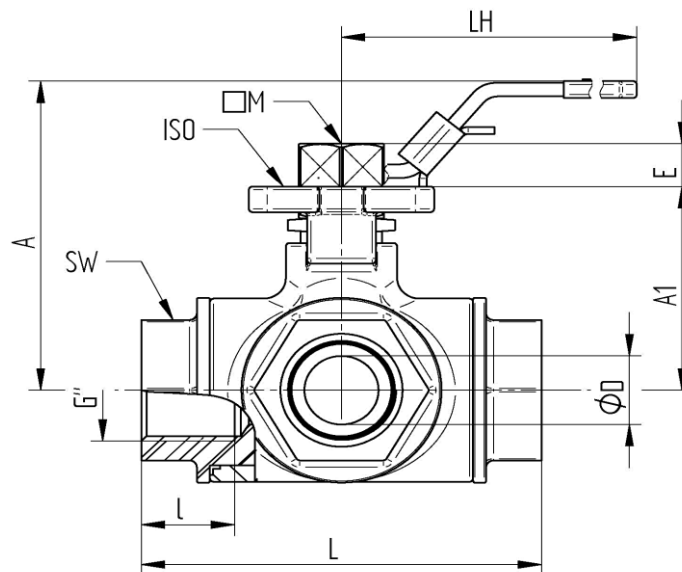
Design:	3-way ball valve, reduced bore	9334 : T-port
Construction:	4-part design	9335 : L-port
Connection end:	Long-female thread according to DIN EN ISO 228-1	
Drive connection:	According to DIN EN ISO 5211 [direct design]	
Medium temperature:	-20°C to +180°C pressure-dependent	
Medium nominal pressure:	Max. 63 bar temperature-dependent	
Housing:	Stainless steel 1.4408	
Screw-in socket:	Stainless steel 1.4408	
Ball:	Stainless steel 1.4401	
Spindle:	Stainless steel 1.4401 Blow-out proof	
Ball seal:	PTFE TFM1600	
Spindle seal:	PTFE FKM O-ring	
Actuation:	Lever handle with closing lug Stainless steel 1.4301, PVC-jacket blue	
Automation:	Electric pneumatic actuator	



- Approval :**
- TA-Luft acc.to DIN EN ISO 15848-1
 - ATEX acc.to 2014/34/EU
 - Antistatisch
 - SIL acc.to IEC61508|61518
 - EAC acc.to TR CU 010/2011



Female thread



Item No.	G"	DN	øD mm	L mm	l mm	A mm	A1 mm	LH mm	SW mm	E mm	M mm	øISO	PN	weight (g)
9334 / 9335-02	1/4"	8	11	79	16	70	42	147	27	9	9	F03/04	63	840/860
9334 / 9335-03	3/8"	10	11	79	16	70	42	147	27	9	9	F03/04	63	820/830
9334 / 9335-04	1/2"	15	11	79	16	70	42	147	27	9	9	F03/04	63	760/770
9334 / 9335-05	3/4"	20	15	88	18	77	49	147	34	9	9	F03/05	63	1030/1050
9334 / 9335-06	1"	25	20	108	23	87	60	177	41	11	11	F04/05	63	1800/1880
9334 / 9335-07	1 1/4"	32	25	124	23	93	63	177	50	11	11	F04/07	63	3010/3070
9334 / 9335-08	1 1/2"	40	32	135	23	103	74	215	56	14	14	F05/07	63	4120/4260
9334 / 9335-09	2"	50	40	164	32	113	83	215	70	14	14	F05/07	63	7020/7100

10/2024