

## Stainless steel

### TECHNICAL DATA

Design:	2-way ball valve, full bore
Construction:	3-part design
Connection end:	Butt welded
Actuator connection:	According to DIN EN ISO 5211 [direct assembly]
Medium temperature:	-20°C to +180°C pressure-dependent
Medium pressure:	Max. 63 bar temperature-dependent
Body:	Stainless steel 1.4408
Body cap:	Stainless steel 1.4408
Ball:	Stainless steel 1.4401
Stem:	Stainless steel 1.4401 Blow-out proof
Ball seal:	PTFE TFM1600
Stem seal:	PTFE   FKM O-ring
Actuation:	Hand lever with locking device Stainless steel 1.4301, blue plastic sleeve
Automation:	Electric   pneumatic actuator
Inspection und Test :	API 598, EN 12266



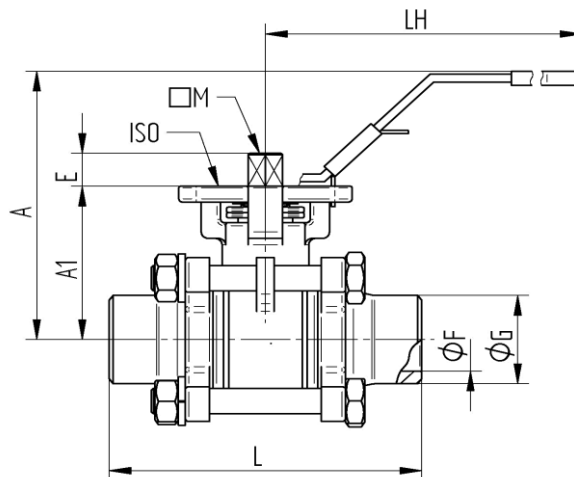
- Approval:**
- TA-Luft acc.to DIN EN ISO 15848-1
  - ATEX acc.to 2014/34/EU
  - Antistatic
  - SIL acc.to IEC61508|61518
  - EAC acc.to TR CU 010/2011



Option:  FDA approval Titel 21, §177.1550



## Butt Welded



Item No.	DN	L mm	A mm	A1 mm	LH mm	Ø F mm	Ø G mm	E mm	M mm	Ø ISO	PN bar	WeightKg)
9325-02	8	70	77	42	147	9,3	18	9	9	F 03/04	63	0,64
9325-03	10	70	77	42	147	12,5	18	9	9	F 03/04	63	0,61
9325-04	15	75	77	42	147	15,8	22	9	9	F 03/04	63	0,63
9325-05	20	90	83	48,5	147	20,9	28	9	9	F 03/05	63	0,91
9325-06	25	100	100	58,5	177	26,7	34	11	11	F 04/05	63	1,35
9325-07	32	110	98	63	177	35,1	43	11	11	F 04/07	63	2,08
9325-08	40	125	90	71	197	40,9	50	14	14	F 05/07	63	2,97
9325-09	50	150	118	78	197	52,5	61	14	14	F 05/07	63	4,30
9325-10	65	190	161	100	267	62,7	76	17	17	F 07/10	63	8,50
9325-11	80	220	153	109	267	78	92	17	17	F 07/10	63	12,30
9325-12	100	270	183	140	400	102,4	115	22	22	F 10	63	23,40