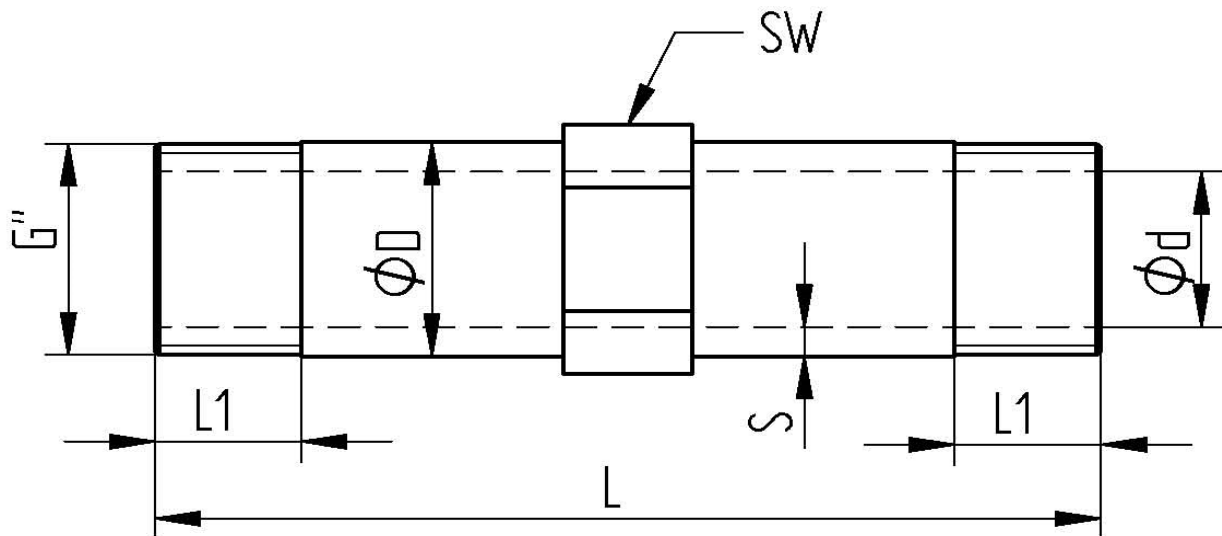


### TECHNICAL DATA

temperature range : -20°C up to max. +100°C  
 pressure range : max. PN 16 bar  
 material : nylon  
 connecting thread : acc. to DIN ISO 228/1



**Attention:** Fitting piece not for permanent operation



| Art. Nr.         | G"   | DN | L mm | L1 mm | SW mm | $\phi D$ mm | $\phi d$ mm | S mm | PN(bar) |
|------------------|------|----|------|-------|-------|-------------|-------------|------|---------|
| 98708712-55-110N | 3/4" | 20 | 110  | 17    | 27    | 26,5        | 19,5        | 4,0  | 16      |
| 98708712-66-130N | 1"   | 25 | 130  | 17    | 34    | 33,5        | 25,3        | 4,0  | 16      |