

### stainless steel

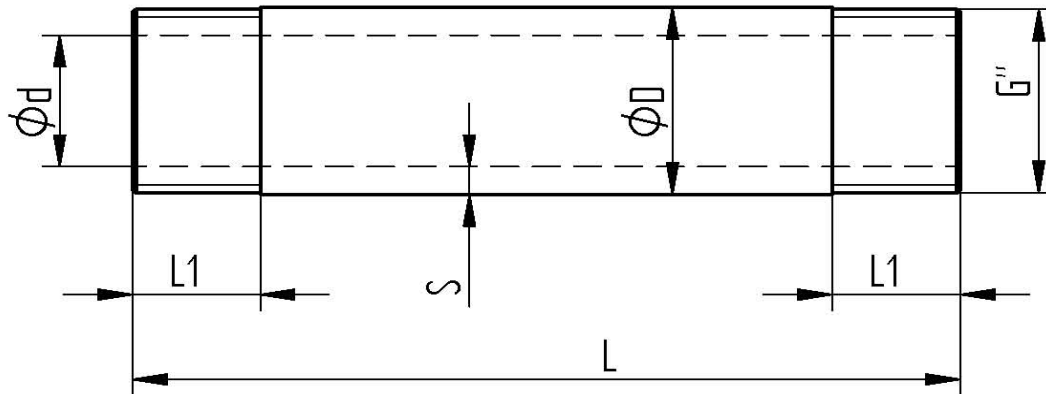
#### TECHNICAL DATA

temperature range :	-20°C up to max. +150°C
pressure range :	max. PN 16 bar
material :	stainless steel 1.4301, seamless
connecting thread :	acc. to DIN ISO 228/1

According to the evaluation basis for metal materials in contact with drinking water from the Federal Environmental Agency in Berlin, the material stainless steel is suitable and approved for drinking water!



**Attention:** Fitting piece not for permanent operation



Art. Nr.	G"	DN	L mm	L1 mm	øD mm	ød mm	S mm	PN(bar)
97708712-44-80	1/2"	15	80	17	21,3	15	3,4	16
97708712-55-80	3/4"	20	80	17	26,7	20	3,5	16
97708712-55-110	3/4"	20	110	17	26,7	20	3,5	16
97708712-55-130	3/4"	20	130	17	26,7	20	3,5	16
97708712-55-165	3/4"	20	165	17	26,7	20	3,5	16
97708712-66-105	1"	25	105	18	33,4	25	4,1	16
97708712-66-110	1"	25	110	18	33,4	25	4,1	16
97708712-66-130	1"	25	130	18	33,4	25	4,1	16
97708712-66-190	1"	25	190	18	33,4	25	4,1	16
97708712-66-220	1"	25	220	18	33,4	25	4,1	16
97708712-77-150	1 1/4"	32	150	20	42,2	34	4,3	16
97708712-77-260	1 1/4"	32	260	20	42,2	34	4,3	16
97708712-88-150	1 1/2"	40	150	22	48,3	39	4,5	16
97708712-88-260	1 1/2"	40	260	22	48,3	39	4,5	16
97708712-99-200	2"	50	200	25	60,3	50	5,0	16
97708712-99-300	2"	50	300	25	60,3	50	5,0	16