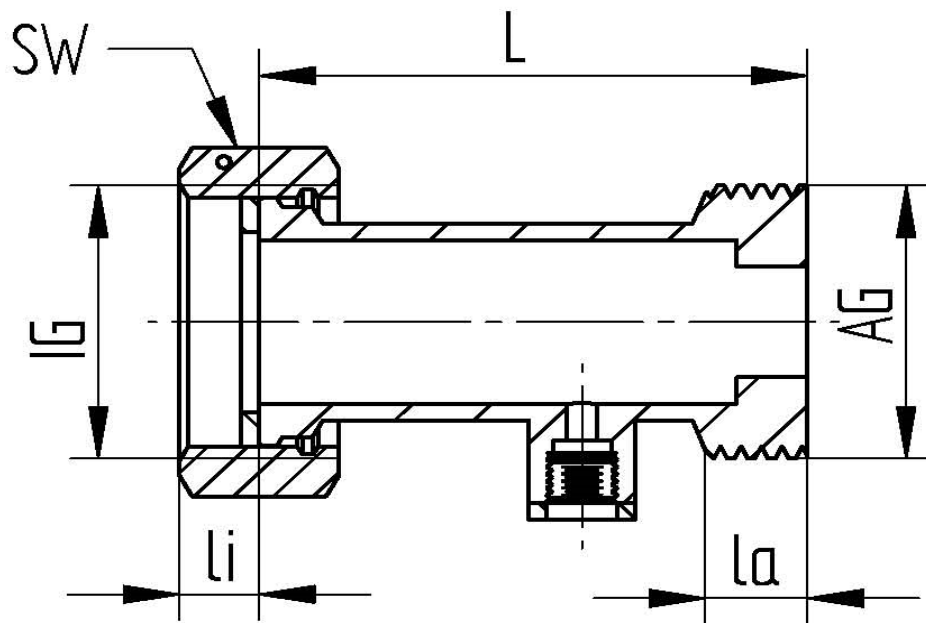
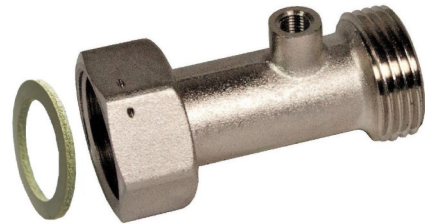


TECHNICAL DATA

temperature range : -20°C up to max. +150°C
 pressure range : max. PN 16 bar
 material : brass CW614N, chrom plated
 connecting thread : acc. to DIN ISO 228/1
 gasket: aramid fiber AFM34



Art. Nr.	DN	AG"	IG"	L mm	li mm	la mm	SW mm	PN(bar)	weight (g)
98000726-66	20	1"	1"	62	11	13	38	16	182