

Brass

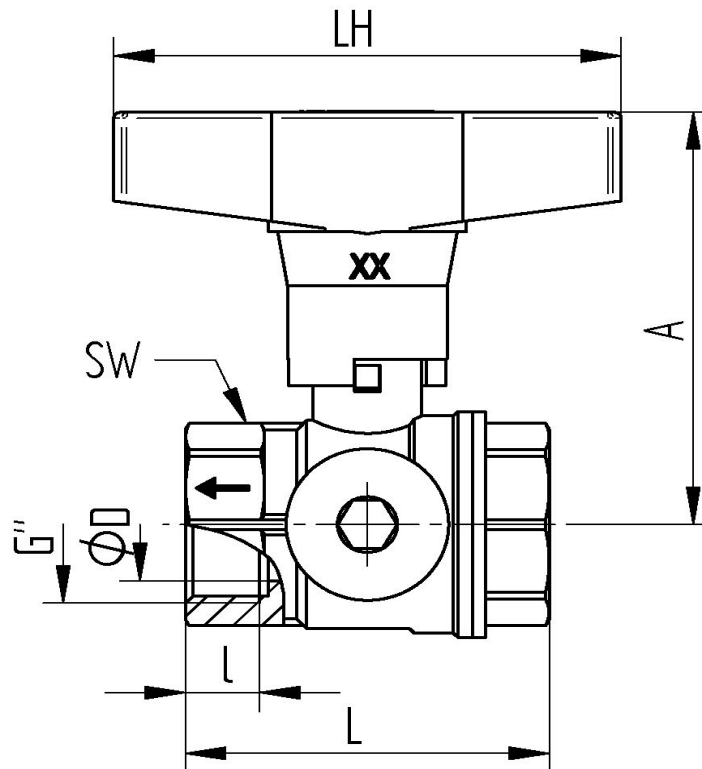
TECHNICAL DATA

temperature range:	- 20°C up to max. + 150°C, pressure-dependent
pressure range :	max. PN 40 bar, depending on nominal size and temperature
connecting thread:	according to DIN EN ISO 228-1
body material:	Brass CW617N nickel plated
threaded ends:	Brass CW617N nickel plated
ball:	Brass CW614N chromium plated
ball seals:	PTFE
stem:	Brass CW617N nickel plated
stem seals:	PTFE , O-Ring FKM with packing gland
strainer:	stainless steel - AISI304 - mesh size 0,5 mm
handle:	extended aluminium T-lever, black painted



strainer can be cleaned or replaced during the operation of the ball valve (in the closed state)

Connecting thread female/female



Art.Nr.	G"	øD mm	L mm	l mm	A mm	LH mm	SW mm	PN bar	weight (gr)
6080-04	1/2"	14	52	12	68	80	26	40	260
6080-05	3/4"	19	57	12	72	80	32	40	363
6080-06	1"	24	65,8	14	78	80	40	32	534
6080-07	1 1/4	32	83	16	86	120	50	25	915
6080-08	1 1/2	38	93	18	94	120	55	25	1260
6080-09	2"	50	110	19	108	120	68	20	2050